

On arrival at the Winding House, you might park in the small car park at the front of the building.



Or you might park in the large car park on the other side of the road. If you do, you'll need to walk over the footbridge to reach the museum.



This will bring you to the back of the museum, so just follow the signs to the front entrance.







To enter the Winding House, go up the steps or the accessible ramp and go through the automatic glass doors.



This will bring you into the atrium, where you can chat to our friendly staff, have a cup of coffee or look around the giftshop.






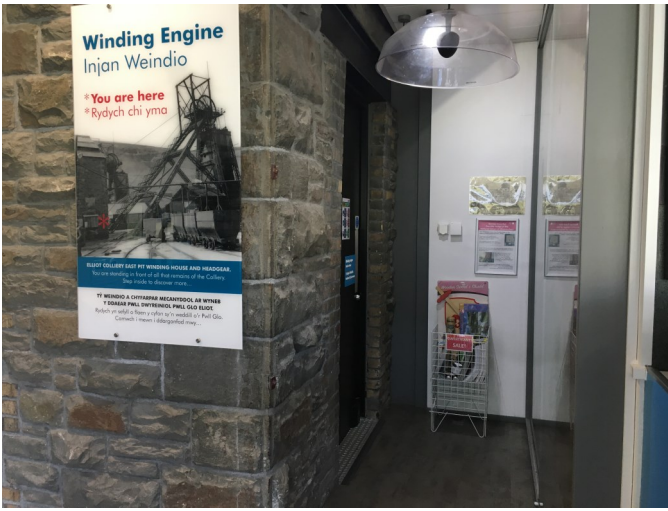
Take a look around our West Gallery. This is our museum exhibition. It's quite warm and dim in here. The pictures below are some of the fun exhibits we've got in the West Gallery.



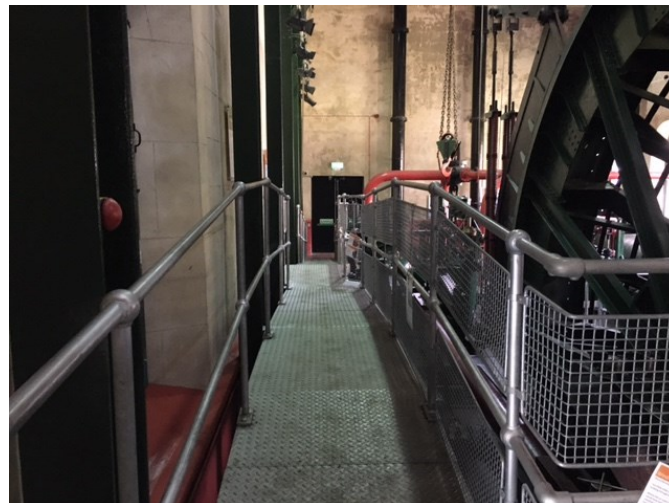
You're welcome to touch/play with anything that's not behind glass or roped off. Enjoy exploring!


 This is a large glass window with a partial glass floor that looks into the winding room, so it can be a little scary.





If you want to look around the winding room, you can enter from the back of the atrium. It is quite dark and echoey in here and it is often cold. It might also have a strange smell—that's the engine oil that keeps the machinery running smoothly.



You'll walk down a sloping, narrow walkway to get to the engine house floor.



The machinery is huge and might be alarming when you first see it, but we'd recommend walking around the room to investigate it yourselves. Or pick up an I Spy game from Visitor Services to play while you take a look around.



You might want to take a look around our East Gallery, where we exhibit art from different artists/groups throughout the year.



If you want to use the toilet or changing facilities, head straight up the stairs, or you can use the lift.



At the top of the stairs there's a corridor on your left and the toilets are on the lift.